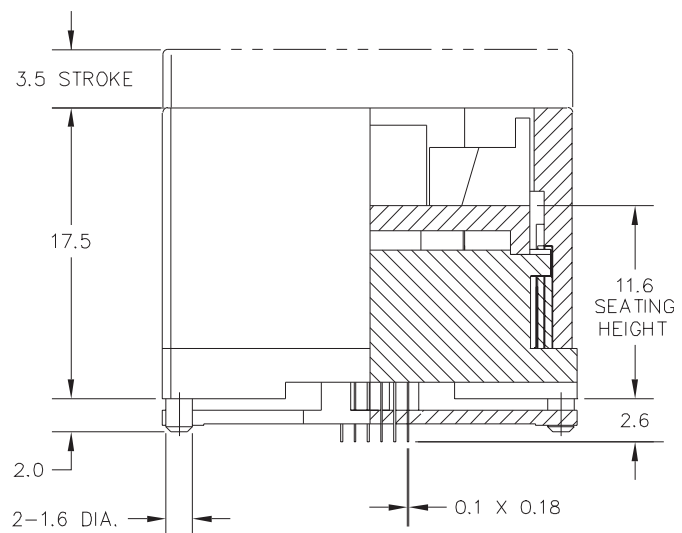
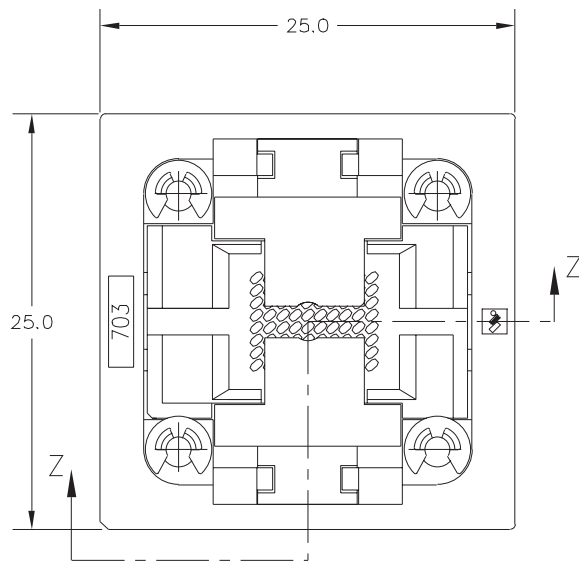
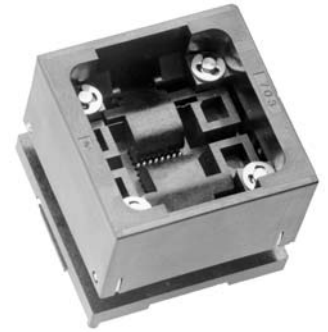


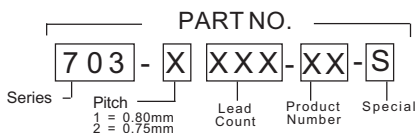
## 703 Series Open Top CSP Socket

- Zero Insertion Force design for automatic loading
- Patented “Y” contact
- Mechanical ejection plate
- For 0.75mm and 0.80mm pitch packages



SECTION Z-Z  
AT FULL STROKE

### DESCRIPTION & ORDERING INFORMATION



### MATERIALS & SPECIFICATIONS

- Socket Body: PES, PEI, LCP or Equivalent
- Contact: Beryllium Copper Alloy
- Contact Plating: 20 microinches gold over 40 microinches of nickel underplate in contact area; gold flash on solder tail
- Insulation Resistance: 1000 MΩ @ 500V DC
- Dielectric: 700V AC for 1 minute
- Temperature Rating: 150°C
- Contact Resistance: 100 mΩ max.
- Contact Normal Force: 13 grams
- Durability: 10,000 cycles min.



## 703 Series Open Top CSP Socket

Pitch e (mm)	Lead Count	Package Size (mm)	Contact Matrix	Ball Dimensions (mm)		Part Number
				Diameter	Height	
0.75	40	5.55 x 9.1	4 x 10	0.35	0.25	703-2040-01
	44	7.75 x 14.35	4 x 11	0.35	0.25	703-2044-01
	48	7.1 x 7.18	6 x 8	0.35	0.20 min.	703-2048-01
	48	7.75 x 7.3	6 x 8	0.35	0.25	703-2048-04
	48	9.616 x 6.85	6 x 8	0.35	0.25	703-2048-05
	48	6.62 x 6.8	6 x 8	0.35	0.25	703-2048-06
	48	7.95 x 8.95	6 x 8	0.30	0.25	703-2048-07
	48	10.4 x 7	6 x 8	0.35	0.20 min.	703-2048-08
	48	6.37 x 6.39	6 x 8	0.35	0.20 min.	703-2048-11
	48	10.5 x 6.39	6 x 8	0.35	0.20 min.	703-2048-12
	48	7 x 7	6 x 8	0.45	0.30	703-2048-13
	48	8 x 7	6 x 8	0.45	0.30	703-2048-14
	48	12 x 7	6 x 8	0.45	0.30	703-2048-15
	48	8.1 x 8.1	6 x 8	0.40/0.45	0.23 min.	703-2048-16
	48	12 x 7	6 x 8	0.30	0.20 min.	703-2048-17
	48	8.1 x 8.1	6 x 8	0.40/0.45	0.23 min.	703-2048-18
	48	8 x 10	6 x 8	0.35	0.27	703-2048-19
	48	11.1 x 8.1	6 x 8	0.40/0.45	0.35	703-2048-20
	48	11 x 8	6 x 8	0.40	0.25	703-2048-24
		56	11.1 x 8.1	7 x 8	0.40/0.45	0.22min.
0.80	40	7.95 x 14.95	4 x 10	0.30	0.25	703-1040-01
	48	6.15 x 8.15	6 x 8	0.40	0.40	703-1048-01
	48	5.95 x 8.95	6 x 8	0.40	0.40	703-1048-02
	48	7.95 x 8.95	6 x 8	0.40	0.40	703-1048-03
	48	7.95 x 13.95	6 x 8	0.45	0.36	703-1048-05
	48	5.95 x 8.95	6 x 8	0.40	0.30	703-1048-06
	48	6.15 x 8.15	6 x 8	0.30	0.25	703-1048-11
	48	10.1 x 8.1	6 x 8	0.45	0.35	703-1048-12
	48	8 x 10	6 x 8	0.45	0.30	703-1048-13-S
	48	7.95 x 8.95	6 x 8	0.30	0.25	703-1048-14
	48	7.95 x 8.95	6 x 8	0.30	0.25	703-1048-14-S
	48	5.95 x 8.95	6 x 8	0.30	0.25	703-1048-15
	48	5.95 x 8.95	6 x 8	0.30	0.25	703-1048-15-S
	48	6 x 12	6 x 8	0.30	0.25	703-1048-16
	48	6 x 12	6 x 8	0.30	0.25	703-1048-16-S
	48	11.1 x 8.1	6 x 8	0.45	0.35	703-1048-17
	48	8.1 x 8.1	6 x 8	0.45	0.392	703-1048-18
	48	6.05 x 9.05	6 x 8	0.45	0.33	703-1048-19
	49	7 x 7	7 x 7	0.46	0.36	703-1049-01
	49	6 x 6	7 x 7	0.48	0.30	703-1049-02
	56	7.92 x 8.28	7 x 8	0.32	0.23	703-1056-01
	56	8 x 10	8 x 8	0.45	0.32	703-1056-03
	60	8.1 x 11.1	8 x 12	0.45	0.35	703-1060-02
	63	8 x 14	8 x 12	0.30	0.25	703-1063-02
	64	8.1 x 11.1	8 x 8	0.45	0.35	703-1064-01
	64	8.1 x 11.1	8 x 8	0.45	0.35	703-1064-01-S
	64	8.1 x 8.1	8 x 8	0.45	0.35	703-1064-02
	64	8.1 x 8.1	8 x 8	0.45	0.35	703-1064-02-S
	64	7.95 x 13.95	8 x 8	0.45	0.36	703-1064-03
	64	7.95 x 13.95	8 x 8	0.45	0.36	703-1064-03-S
	64	8 x 10	8 x 8	0.45	0.35	703-1064-04-S
	64	8 x 11	8 x 8	0.30	0.25	703-1064-05-S
	64	8 x 12	8 x 8	0.40	0.35	703-1064-06
	64	8.1 x 11.1	8 x 8	0.45	0.35	703-1064-07
	64	8.1 x 8.1	8 x 8	0.45	0.35	703-1064-08
	64	8 x 13	8 x 8	0.40	0.35	703-1064-09
	64	8.1 x 12.1	8 x 8	0.45	0.35	703-1064-11
	72	8 x 11	8 x 12	0.45	0.35	703-1072-01
	80	8 x 14	8 x 10	0.45	0.35	703-1080-01
	84	8 x 11	8 x 12	0.45	0.35	703-1084-01
88	8 x 11	8 x 12	0.45	0.35	703-1088-01	
96	8 x 11	8 x 12	0.45	0.35	703-1096-01	